

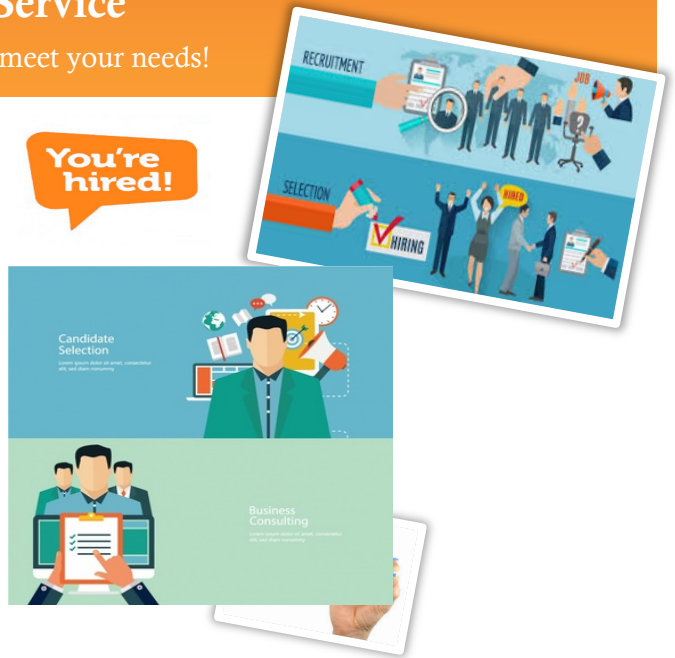
# Lisa Soultana - SOULutions

## Recruitment Service

Finding your workforce to meet your needs!

### Recruitment service outline

- A bespoke recruitment campaign
- Visiting the GP practice and reviewing recruitment needs
- Scoping meeting with the GP partners to establish their workforce needs
- Drafting all the recruitment documents to include: the advert, job description and person specification, GP practice profile, job application information pack and shortlisting and interview questions
- Shortlisting job applications – Stage 1 and Stage 2
- Conducting informal chats with stage 1 shortlisted candidates
- Inviting Stage 2 successful candidates to the interview and taking any initial queries and offering support
- Organising the interview process and being present at an interview
- Guiding the GP partners through the process of selecting the best candidate
- Establishing and maintaining a relationship with the new recruit
- Signposting the new recruit to the LMC support



*"I just wanted to feed back to you how very helpful Lisa has been.*

*Lisa helped us put together what felt like a very professional recruitment process. She took part in the whole process through shortlisting and two tiers of interviews and skillfully guided us throughout the process, rather than trying to take control. Her past experience of working as a Practice Manager was obviously very pertinent. We have now recruited what seems to be a very strong candidate who has previously worked in industry".*

### Endorsement

This recruitment service is endorsed by Derby and Derbyshire Local Medical Committee and the GP Task Force. Lisa understands the needs of general practice. Her previous positions include Practice Manager and Chief Operating Officer for the LMC.

### Recruitment service cost

**Management - £3495.00**

**Clinical (GP/Nurse/ANP) - £3995.00**

**Plus, job adverts costs (typically in the region of £200.00)**

**No hidden charges!**

**100% recruitment success rate**

### What next?

Call Lisa Soultana on 0788 398 1330 or drop her an email [lisasoultana@gmail.com](mailto:lisasoultana@gmail.com) to discuss your workforce and recruitment campaign!

**CONTACT ME**